

A WONDERFUL WORLD OF HABU VIPERS....  
FULL OF THRILLS AND EXCITEMENT



▲AN EXCITING FIGHT BETWEEN A COBRA AND A MONGOOSE You will really be in breathless suspense during the outstanding demonstration of the mighty cobra's strength against the keen senses of the mongoose, while you await the climatic moment.

**THE SNAPSHOT OF A LIFETIME**

A once in a lifetime chance to have your photo taken with a tremendous snake coiled around your neck.

**HABU MUSEUM** At the Habu Museum you can see and learn all about Habu vipers on Okinawa. The exhibitions depict the different stages of the Habu's lifestyle and precarious nature, including a dramatic hatching, a vivid display of the reptiles predatory instincts, and a provoked demonstration of the Habu's lethal bite.

● Business time

Summer April } October	Monday Saturday	9:00~5:30
	Sundays Holidays	9:00~6:00
Winter November } March	Monday Saturday	9:00~5:00
	Sundays Holidays	9:00~5:30

● Entrance fee

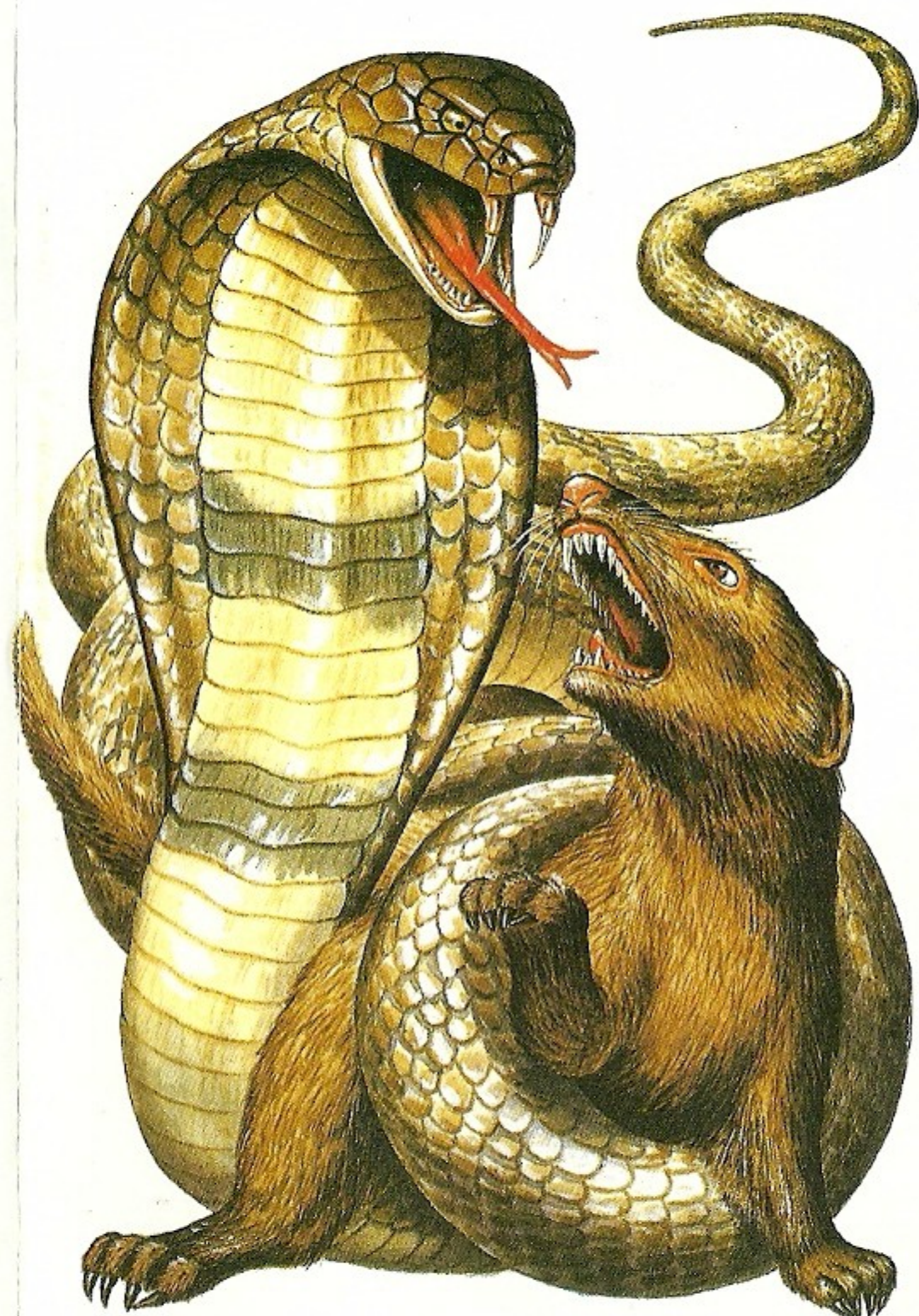
● Entrance fee (include Sales tax)				
		Gyokusendo	Vipers Park	Common fee
Individual	Adult	¥730	¥520	¥1,140
	Child	¥360	¥260	¥520

玉泉ハブ公園

January, 1990

玉泉洞

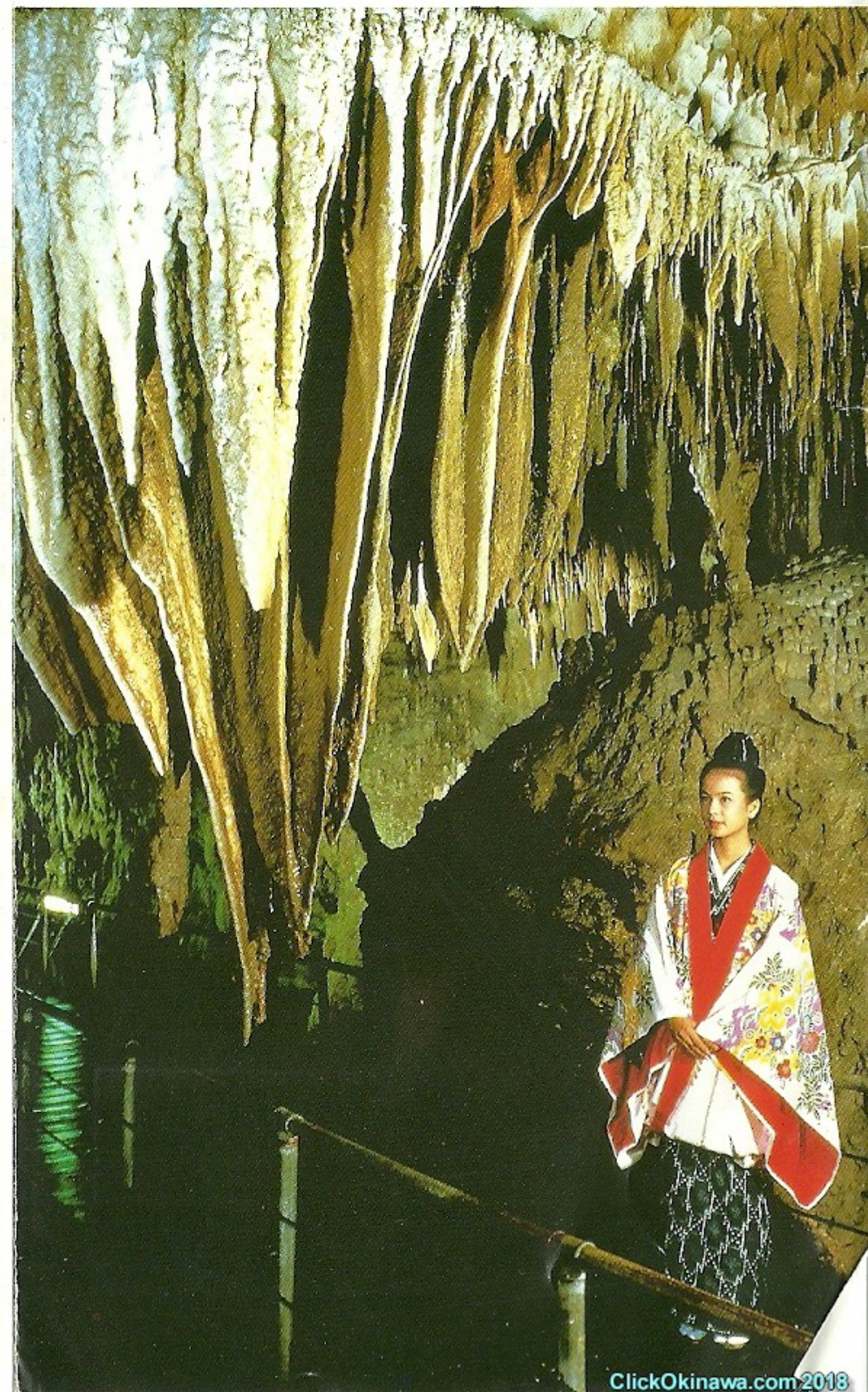
SNAKE PARK



GYOKUSENDO TOURISM CO., LTD.

GYOKUSEN CAVERN :  
1336 Aza Maekawa, Tamagusuku-village, Shimajiri-gun, OKINAWA, JAPAN.  
TEL.09894(9)7421  
HEAD OFFICE :  
4th floor Asahiya build., 1-3-24 Makishi, Naha-city, OKINAWA, JAPAN.  
TEL.0988(67)0141

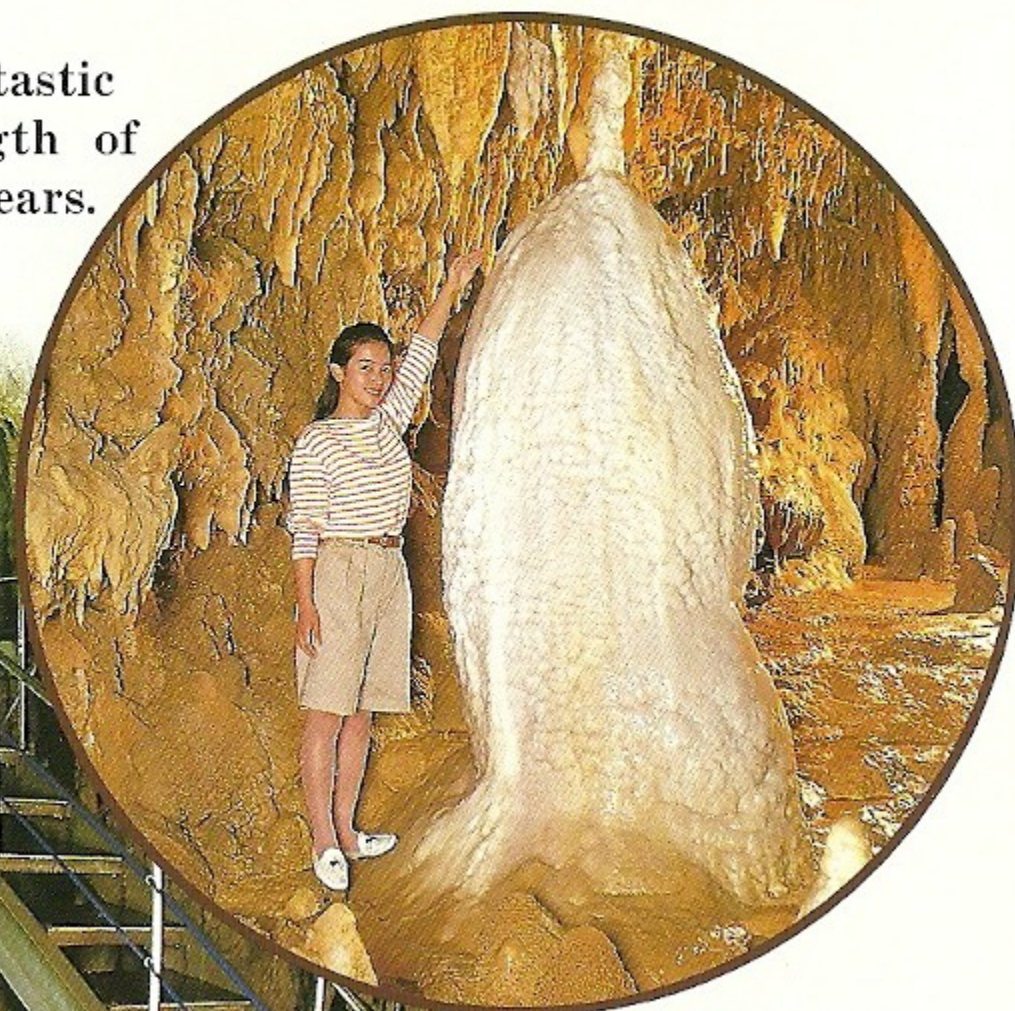
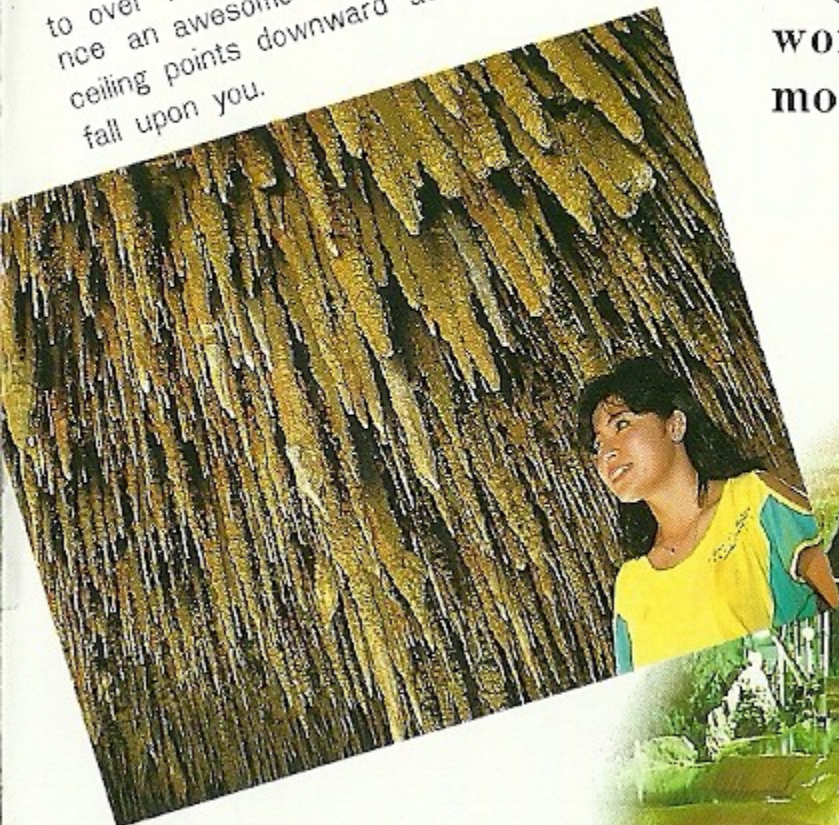
OKINAWA  
GYOKUSENDO CAVE



# EXPERIENCE THE MYSTERIES OF THE ORIENT AND THE MIRACLES OF NATURE

A grand hall, the largest of its kind in the East, exhibiting a fantastic world of Stalactites and Stalagmites. The limestone cavern with a length of more than 5,000 meters, has been perfected by nature for over 400,000 years.

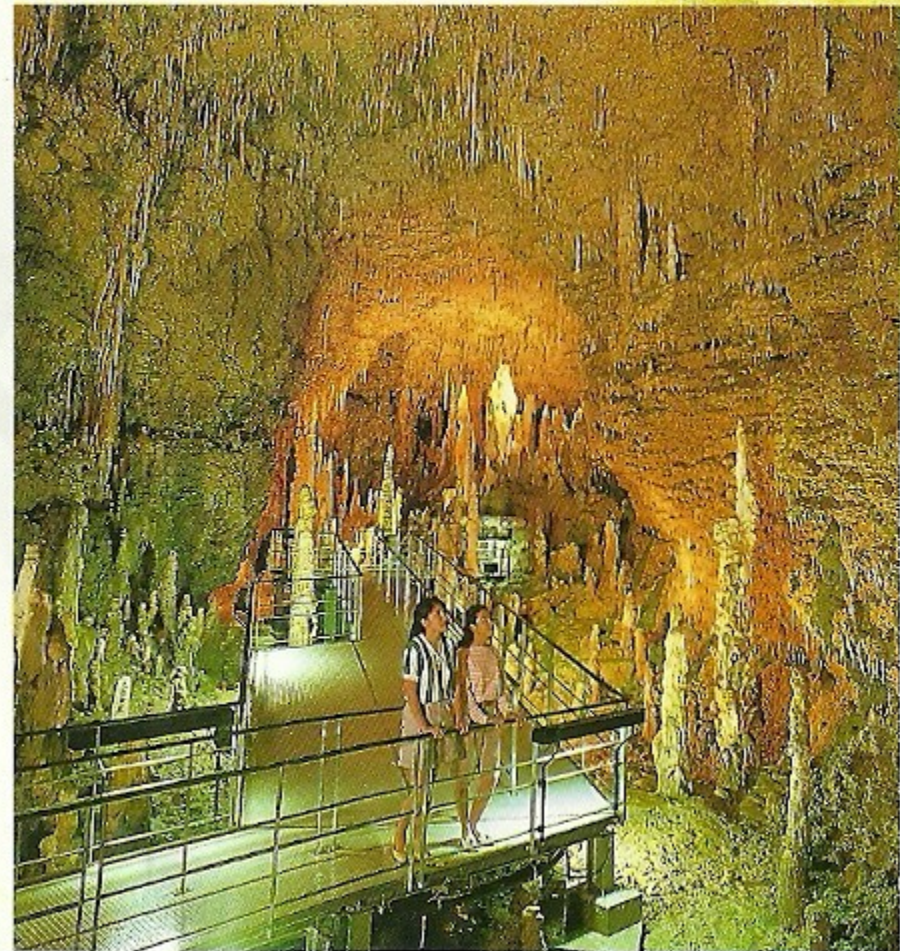
▼ **SPIKED CEILING** When you view over 20,000 stalactites ranging in sizes to over 10 meters long, you may experience an awesome feeling as the spiked ceiling points downward as though it may fall upon you.



▼ **THE LARGEST CAVERN IN THE EAST**

The magnificent scene of the forest of stalagmites in the 20 meters high by 20 meters wide by 80 meters long hall, is the mystery of the East and is living proof that nature is the greatest artist.

▲ **GIANT STALAGMITES** Take a moment to view the towering stalagmite which is as impressive as a Corinthian column of marble and as stout as a silvery rocket.



▲ **JAPAN'S LARGEST GOLDEN LIMESTONE DAM**  
The spectacular golden limestone dam called "Kabocha Ishi" (pumpkin stone), is no less than 2.5 meters high by 25 meters wide and is the largest of its kind in Japan.

